

WEDGE CLAMPING ELEMENTS



AREA OF USE

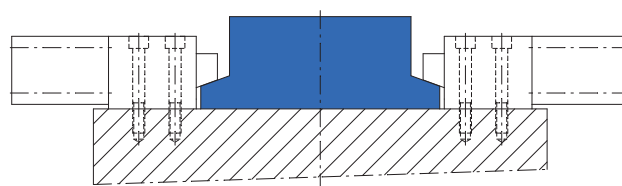
Tools with beveled clamping edge are securely clamped with wedge clamping elements and also held with drop of pressure. The elements have especially proven valuable with tools for pressure die casting machines and other pressing tools.

DESCRIPTION

A guide element is flanged with clamping bolts on a double-acting block cylinder. The bevel of the tool is clamped with the bevel of the clamping bolt. Through construction with a large wedge angle the tool is held self-locking, also larger clamping edge tolerances are bridged.

FEATURES

- Strokes of 20–40 mm
- Clamping force up to 630 kN
- Compact design
- Max. operating pressure 275 / 350 bar
- Design with or without position monitor
- Pistons made of case hardened steel



IMPORTANT INSTRUCTIONS

Due to the transverse forces occurring while clamping with wedge clamping elements, the tools must be secured against moving, for example with positioning pins or stop elements.

The elements must be constructed in a way to protect against the penetration of dirt, chips, coolant, etc. Lubrication of the wedge pins in the intervals adapted to the operating conditions must only be done in the retracted state.

In case of operating error the clamping pins are completely retracted into the housing and the tool part can fall out due to this.

POSITION MONITOR

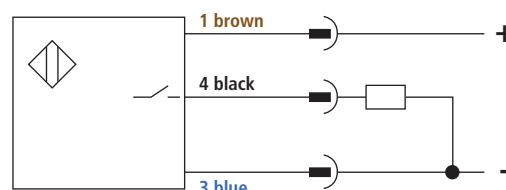
When using a position monitor the appropriate conditions of use and protective measures must be taken into account and ensured.

TECHNICAL DATA PROXIMITY SWITCH

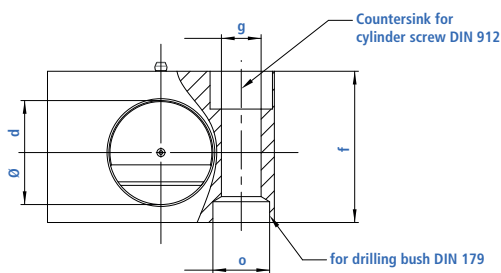
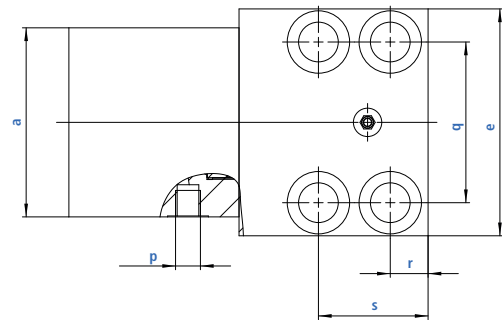
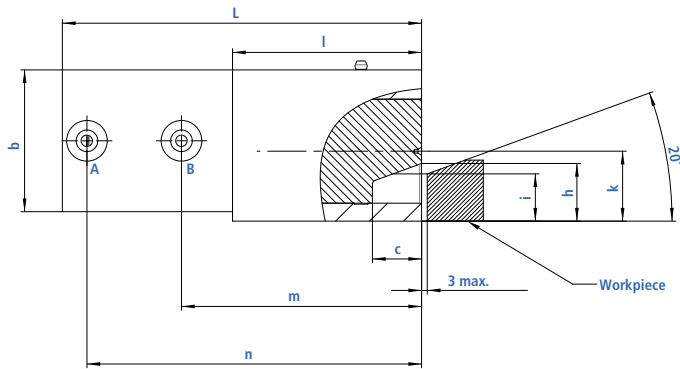
Switching function	Closing
Output technology	PNP
Minimum spacing of the switching positions	13 mm
Ambient temperature	-25° C to +70° C
Operating voltage	10 to 30 V DC
Residual ripple	Ω 15%
Continuous current	Max. 200 mA
Nominal switching distance	1.5 mm
Short circuit test	Yes
Housing material	Steel, rust-free

PROXIMITY SWITCH

Connection circuit diagram



On request other designs of the switches are available in addition to the ones given here.



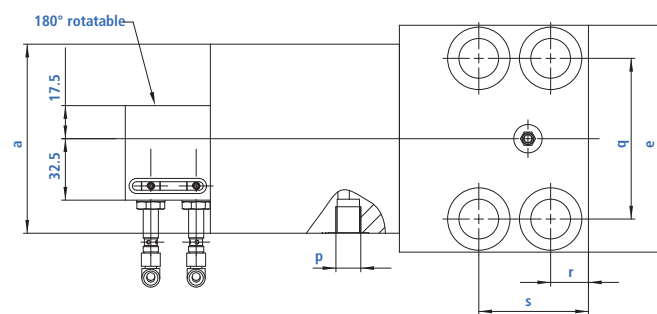
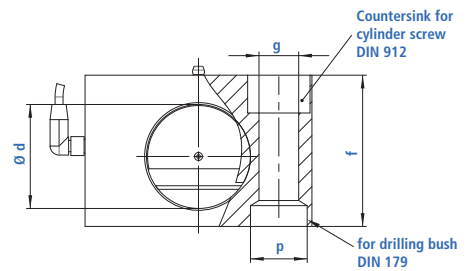
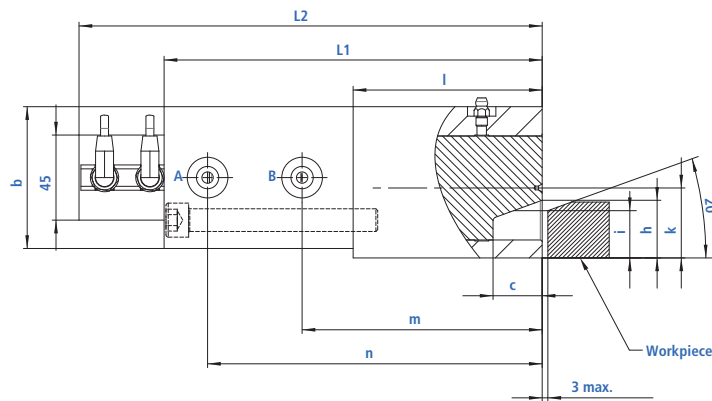
Clamping force: Force with which the tool/the mold is clamped against the support.

Retaining force: Force which the clamping element and fastening with screw quality 8.8 can accept, correct material and correct geometry of the holder assumed.

TECHNICAL VALUES

Cylinder piston Ø D	mm	25	40	50	63	80	100	125
Max stroke	mm	20	25	25	30	32	40	40
Maximum operating pressure	bar	350	275	350	350	350	350	350
Max. clamping force	kN	25	50	100	160	250	400	630
Retaining force (Screw quality 8.8)	kN	35	65	130	210	320	520	820
a	mm	65	85	100	125	160	200	230
b	mm	45	63	75	95	120	150	180
c	mm	20	25	26	32	40	45	50
d	mm	30	40	55	70	80	100	125
e	mm	70	95	120	150	200	240	280
f	mm	48	65	80	105	125	160	190
g Ø	mm	13	17	21	26	33	39	45
h	mm	19.5	23.5	30.5	37	38	60	70
i	mm	15	18	25	30	30	50	60
k	mm	21.5	28	37	49	55	75	85
l		58	78	100	125	150	180	225
L	mm	122	157	190	227	267	310	375
m	mm	76	102	127	151	184	215	272
n	mm	111	146	177	210	246	285	344
o Ø H7 x depth	mm	18 x 7	26 x 9	30 x 11	35 x 11	48 x 13	55 x 16	62 x 16
p		G 1/4	G 1/4	G 1/4	G 1/2	G 1/2	G 1/2	G 1/2
q (+/- 0.02 for Ø o)	mm	48	65	85	106	140	180	210
r	mm	14	16	20	25	26	32	38
s	mm	38	46	58	75	78	95	108

Order no.		530-1-025	530-1-040	530-1-050	530-1-063	530-1-080	530-1-100	530-1-125
-----------	--	-----------	-----------	-----------	-----------	-----------	-----------	-----------



Clamping force: Force with which the tool/the mold is clamped against the support.

Retaining force: Force which the clamping element and fastening with screw quality 8.8 can accept, correct material and correct geometry of the holder assumed.

TECHNICAL VALUES

Cylinder piston Ø D	mm	25	40	50	63	80	100	125
Max stroke	mm	20	25	25	30	32	40	40
Maximum operating pressure	bar	350	275	350	350	350	350	350
Max. clamping force	kN	25	50	100	160	250	400	630
Retaining force (Screw quality 8.8)	kN	35	65	130	210	320	520	820
a	mm	65	85	100	125	160	200	230
b	mm	45	63	75	95	120	150	180
c	mm	20	25	26	32	40	45	50
d	mm	30	40	55	70	80	100	125
e	mm	70	95	120	150	200	240	280
f	mm	48	65	80	105	125	160	190
g Ø	mm	13	17	21	26	33	39	45
h	mm	19.5	23.5	30.5	37	38	60	70
i	mm	15	18	25	30	30	50	60
k	mm	21.5	28	37	49	55	75	85
l		58	78	100	125	150	180	225
L1	mm	134	168	200	235	270	310	375
L2	mm	169	211	245	280	325	365	430
m	mm	76	102	127	151	184	215	272
n	mm	111	146	177	210	246	285	344
o Ø H7 x depth	mm	18 x 7	26 x 9	30 x 11	35 x 11	48 x 13	55 x 16	62 x 16
p		G 1/4	G 1/4	G 1/4	G 1/2	G 1/2	G 1/2	G 1/2
q (+/- 0.02 for Ø o)	mm	48	65	85	106	140	180	210
r	mm	14	16	20	25	26	32	38
s	mm	38	46	58	75	78	95	108

Order no.	531-1-025	531-1-040	531-1-050	531-1-063	531-1-080	531-1-100	531-1-125
-----------	-----------	-----------	-----------	-----------	-----------	-----------	-----------

Wedge clamping element with position monitor at rear (monitoring on the side on request).